

Sugar Defender Reviews: Honest Opinion- Ingredients, Safety ,and Customer Feedback



Sugar Defender Reviews: Most users have shared positive feedback on Sugar Defender (Rating 4.8/5). This supplement appears to effectively support healthy blood

sugar levels without drastic dietary changes. If you're seeking an easy and convenient option to aid blood sugar management, Sugar Defender could be a worthwhile addition to your routine.

Sugar Defender Reviews

Balance Your Blood Sugar

High blood sugar levels can be a big problem today, affecting health without people even realizing it. It doesn't just lead to diabetes; it can also cause surprising weight gain. This happens because of how the body handles insulin and sugar. When blood sugar goes up too often, it can mess with insulin, which helps control metabolism. Over time, this can make the body store more fat.

People who use Sugar Defender have given it a great rating of 4.93/5. They like how it helps keep blood sugar steady and improves overall health. Its natural ingredients make it a popular choice for those who want to live a healthier life.

Sugar Defender: Quick Overview

Feature	Details
Supplement Name	Sugar Defender
Category	Blood Sugar Support & Weight Management Supplement
Formulation	Liquid supplement
Age Group	Adults (18 years and older)
Net Weight	60 ml per bottle, with a 30-day supply
Where to Buy	Available exclusively on the official website!

Ingredients	Chromium, African Mango Extract, Maca Root, Gymnema, Eleuthero, Coleus, Ginseng, Guarana
Benefits	Helps regulate blood sugar, boosts metabolism, increases energy, reduces cravings, supports weight management
Manufacturing Standards	Produced in FDA-registered and GMP-certified facilities
Usage Instruction	Take one full dropper daily, preferably before meals
Side Effects	Generally well-tolerated; rare cases of mild digestive discomfort
Price	Starting from \$49 per bottle
Refund Policy	60-day money-back guarantee
Bonuses	Free eBooks included with select packages
Rating	4.93/5
Availability	Only available online
Official Website	Click Here

What is Sugar Defender?

Sugar Defender is a natural dietary supplement designed to help regulate blood sugar levels and support weight management. Formulated as a liquid, it combines plant-based ingredients and essential minerals to enhance insulin sensitivity, stabilize glucose levels, and promote a balanced metabolism. Key ingredients like chromium, African mango extract, maca root, and ginseng work synergistically to support blood sugar control, reduce sugar cravings, boost energy, and improve metabolic function.

Manufactured in FDA-approved, GMP-certified facilities, Sugar Defender is free from synthetic additives and harmful stimulants, making it a safe option for adults seeking a natural approach to maintaining healthy blood sugar levels and overall well-being.

Detailed Analysis of Each Ingredient in Sugar Defender



Eleuthero

Increases Energy and Reduces Fatigue



Coleus

Fat Burning Aid



Maca Root

Boosts Your Energy



African Mango

Fat Burning Agent



Guarana

Stimulates Your Metabolism



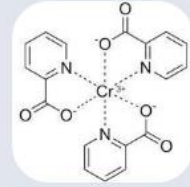
Gymnema

Supports Healthy Heart & Blood Sugar



Ginseng

Supports Healthy Blood Glucose



Chromium

Controls Blood Glucose Levels

Here's a closer look at each of the primary ingredients in **Sugar Defender** and how they contribute to blood sugar regulation, metabolism, and overall health:

Chromium

Function: Chromium is a trace mineral essential for glucose metabolism. It helps improve insulin sensitivity by aiding in glucose transport into cells, which is crucial for balancing blood sugar.

Benefits: Regular intake of chromium may help manage insulin resistance, stabilize blood sugar, and support overall metabolic health.

African Mango Extract

Function: This extract, derived from the seeds of the African mango (*Irvingia gabonensis*), has been studied for its effects on metabolism and appetite control.

Benefits: Known to improve insulin sensitivity, it can help regulate blood sugar and support weight loss by managing cravings and reducing fat storage. African mango also promotes a healthy lipid profile, potentially benefiting heart health.

Maca Root

Function: An adaptogen that supports overall stamina and energy levels, maca root is often used to balance stress hormones, which can indirectly influence blood sugar.

Benefits: While not directly linked to glucose metabolism, it contributes to overall vitality, reducing stress-related blood sugar spikes. It's also known for its energy-boosting and mood-stabilizing properties.

Gymnema

Function: *Gymnema sylvestre* has a long history in Ayurvedic medicine for managing blood sugar. Gymnemic acids in the plant help reduce sugar absorption in the intestines.

Benefits: Known as a “sugar destroyer,” it helps reduce cravings for sugary foods and supports stable glucose levels by slowing down glucose absorption and potentially enhancing insulin function.

Eleuthero (Siberian Ginseng)

Function: As an adaptogen, eleuthero helps the body adapt to physical and mental stress, promoting balanced energy levels.

Benefits: By supporting the adrenal glands, eleuthero helps regulate cortisol (stress hormone), which can have a significant impact on blood sugar stability. It also boosts immunity and energy levels.

Coleus

Function: *Coleus forskohlii*, often used in traditional medicine, contains forskolin, which has metabolic benefits and supports fat burning.

Benefits: Forskolin in coleus may improve metabolic rate and support weight management. Its potential role in fat metabolism can indirectly aid blood sugar control by improving body composition.

Ginseng

Function: Ginseng is known for its antioxidant properties and its ability to enhance energy and cognitive function.

Benefits: Panax ginseng has been shown to improve insulin sensitivity and may help regulate blood sugar. It also has adaptogenic properties that support physical and mental energy levels, which can be beneficial for those experiencing fatigue due to blood sugar fluctuations.

Guarana

Function: Rich in caffeine and antioxidants, guarana is known for its stimulating effects on the nervous system.

Benefits: Beyond its energy-boosting properties, guarana supports metabolism and may help control weight. Its antioxidants can combat oxidative stress, which is linked to diabetes complications.

Overall Benefits and Mechanism of Sugar Defender

Stabilizing Blood Sugar: Ingredients like chromium and gymnema are directly involved in blood sugar regulation, helping to reduce insulin resistance and promote stable glucose levels.

Boosting Energy and Vitality: Ingredients like ginseng, maca root, and eleuthero contribute to sustained energy, helping users feel more alert and active throughout the day.

Metabolic Enhancement: African mango extract, coleus, and guarana are known to aid in fat metabolism, which can help support weight loss, an important factor in managing insulin sensitivity.

How does Sugar Defender Work?

Sugar Defender works through a multi-faceted approach to support blood sugar regulation, enhance metabolic health, and promote overall well-being. Here's a breakdown of its key mechanisms:

Regulating Blood Sugar Levels

Sugar Defender employs a blend of scientifically backed ingredients that collectively work to stabilize blood sugar levels. By integrating components such as chromium and

gymnema, it helps improve insulin sensitivity, enabling the body to utilize glucose more effectively. This regulation is crucial for preventing spikes and crashes in blood sugar, which can lead to cravings and energy fluctuations.

Enhancing Insulin Sensitivity

The formula is designed to boost the body's insulin sensitivity, which is essential for maintaining healthy glucose levels. Insulin is the hormone responsible for allowing glucose to enter cells, and by enhancing its effectiveness, Sugar Defender helps lower blood sugar levels and prevents excess glucose from being stored as fat.

Stabilizing Energy Levels

By maintaining balanced blood sugar, Sugar Defender plays a vital role in ensuring consistent energy throughout the day. It mitigates the sharp rises and falls in glucose that can lead to fatigue and irritability. This steady supply of energy is particularly beneficial for individuals struggling with fatigue due to blood sugar imbalances.

Supporting Metabolism

Ingredients like African mango extract and coleus are included to stimulate metabolism, aiding the body in processing glucose and fat more efficiently. This metabolic boost not only supports weight management but also helps reduce the risk of obesity, which is often linked to blood sugar irregularities.

Curbing Sugar Cravings

One of the challenges in managing blood sugar is the tendency to crave sugary foods, which can lead to overeating and erratic glucose levels. Sugar Defender addresses this by including gymnema and other natural compounds that help suppress sugar cravings, making it easier for users to adhere to a healthier diet and maintain stable blood sugar.

Cardiovascular Support

By promoting healthy blood glucose levels and regulating blood pressure, Sugar Defender contributes to overall cardiovascular health. Stable blood sugar and pressure are essential for preventing strain on the heart and circulatory system, reducing the risk of cardiovascular diseases.

Natural and Safe Composition

Sugar Defender is formulated with 100% natural ingredients, ensuring it supports health without the adverse effects commonly associated with synthetic supplements. This focus on safe, organic components allows users to incorporate it into their daily routines without concerns about side effects.

Holistic Improvement in Health

Beyond just blood sugar management, Sugar Defender's ingredients are designed to enhance overall well-being. With components that support energy levels, reduce stress, and improve cognitive function, users may experience comprehensive health benefits, contributing to a more vibrant and active lifestyle.

Sugar Defender Benefits



The image features a central product shot of a dark amber glass bottle of Sugar Defender with a black dropper cap. The label on the bottle reads 'LV LINDORGA SUGAR DEFENDER SUPPORT FORMULA' and 'DIETARY SUPPLEMENT | 60ML/2 OZ.' at the bottom. Surrounding the bottle are four circular inset images: two women looking at a phone, a man in a white t-shirt, and a woman smiling. To the right of the bottle, on a red background, is the word 'Benefits' in large white font, followed by four icons in white circles: a lightning bolt, a heart with a plus sign, a clock, and a running figure. Each icon is paired with a benefit description in white text.

Benefits

- ENERGY MANAGEMENT**
Supports vitality throughout the day.
- WELLNESS SUPPORT**
Supports overall wellness.
- DAILY SUPPORT**
Convenient addition to your daily routine.
- SUPPORTS ACTIVE LIFESTYLE**
Great for those with an active lifestyle.

*This product is **not intended** to diagnose, treat, cure, or prevent any disease.*

Sugar Defender offers a range of benefits aimed at promoting healthy blood sugar levels and enhancing overall well-being. Here are some of the key advantages associated with this dietary supplement:

Regulates Blood Sugar Levels

Sugar Defender helps maintain stable blood glucose levels by enhancing insulin sensitivity and supporting the body's ability to process glucose efficiently. This regulation is crucial for preventing spikes and crashes that can affect mood and energy.

Enhances Insulin Sensitivity

The formulation includes ingredients that improve insulin sensitivity, allowing for better utilization of glucose in the body. This is vital for individuals seeking to manage their blood sugar levels and reduce the risk of insulin resistance.

Boosts Energy Levels

By stabilizing blood sugar, Sugar Defender ensures a consistent supply of energy throughout the day. Users often report feeling more energized and less fatigued, helping them maintain productivity and activity levels.

Promotes Weight Loss

The supplement supports weight management by curbing cravings and enhancing metabolism. Ingredients such as African mango extract and gymnema help reduce the urge for sugary foods, aiding in weight loss efforts.

Mitigates Sugar Cravings

One of the notable benefits of Sugar Defender is its ability to suppress sugar cravings. This helps individuals adhere to healthier eating patterns, making it easier to control blood sugar and reduce overall sugar intake.

Supports Healthy Glucose Metabolism

Sugar Defender promotes efficient glucose metabolism, which is essential for overall metabolic health. This support helps the body effectively convert food into energy, reducing the risk of metabolic disorders.

Cardiovascular Health Support

By promoting stable blood sugar levels and regulating blood pressure, Sugar Defender contributes to cardiovascular health. Maintaining healthy glucose and blood pressure levels helps reduce the strain on the heart and circulatory system.

Enhances Cognitive Function

The natural ingredients in Sugar Defender may also support cognitive health. By providing a steady supply of energy and reducing blood sugar fluctuations, users can experience improved mental clarity and focus.

Improves Overall Well-Being

With a comprehensive approach to health, Sugar Defender not only focuses on blood sugar management but also enhances overall vitality. Users may notice improvements in mood, energy, and overall quality of life.

Natural and Safe Composition

Sugar Defender is formulated with 100% natural ingredients, making it a safe option for those looking to manage their blood sugar levels without the risk of synthetic side effects. Its gentle formulation allows for regular use without the concern of dependency or adverse reactions.

Convenient Liquid Formula

The liquid form of Sugar Defender makes it easy to incorporate into daily routines. A simple daily dose ensures that users can easily benefit from its properties without complicated preparations.

Transform your wellness routine! [Try Sugar Defender risk-free with our 60-day money-back guarantee!](#)

How to Use Sugar Defender

How to Use

Place a few drops in your mouth after a full meal for best results.

Consistent use recommended for optimal benefits.

Shake well before use.



*This product is **not** intended to diagnose, treat, cure, or prevent any disease.*

To maximize the benefits of **Sugar Defender** and ensure effective blood sugar management, follow these simple usage instructions:

Dosage and Administration

Serving Size: Take one full dropper (approximately 1 ml) of Sugar Defender daily.

Timing: For optimal results, it is recommended to take Sugar Defender in the morning before breakfast. This timing can help stabilize blood sugar levels throughout the day.

Method of Consumption

Direct Method: You can take the dropper directly under your tongue for faster absorption.

Dilution Method: Alternatively, you can mix the dropper of Sugar Defender into a glass of water or any non-caffeinated beverage, which can make it more palatable.

Consistency is Key

Regular Use: For the best results, incorporate Sugar Defender into your daily routine consistently. Regular intake is crucial for achieving and maintaining balanced blood sugar levels.

Complementary Lifestyle

Healthy Diet: While Sugar Defender supports blood sugar management, pairing it with a balanced diet rich in whole foods, lean proteins, healthy fats, and plenty of fruits and vegetables will enhance its effectiveness.

Physical Activity: Regular exercise can further support blood sugar control, metabolism, and overall health. Aim for at least 150 minutes of moderate exercise per week.

Additional Tips

Stay Hydrated: Ensure you drink plenty of water throughout the day to support overall health and well-being.

Monitor Blood Sugar Levels: If you have diabetes or blood sugar concerns, regularly monitoring your blood sugar levels can help you track the effectiveness of Sugar Defender in conjunction with dietary and lifestyle changes.

Sugar Defender Side Effects

Sugar Defender is formulated with natural ingredients and is generally well-tolerated by most users. However, like any dietary supplement, some individuals may experience side effects. Here's a detailed overview:

Common Side Effects

Mild Digestive Discomfort: Some users may report symptoms such as bloating, gas, or mild stomach upset. These effects are typically temporary and may diminish with continued use as the body adjusts to the supplement.

Headaches: A few individuals might experience headaches, especially if they are sensitive to the ingredients or if they take the supplement without sufficient food or hydration.

Rare Side Effects

Allergic Reactions: Although rare, individuals who are allergic to any of the ingredients should avoid Sugar Defender. Symptoms may include rash, itching, or swelling.

Hormonal Effects: Ingredients like Ashwagandha may have hormonal effects, which could be a concern for individuals with specific health conditions or those taking hormonal medications.

Precautions

Consult Healthcare Provider: It's important for individuals with pre-existing health conditions, especially those related to blood sugar or metabolism, to consult a healthcare professional before starting Sugar Defender or any new supplement.

Pregnant or Nursing Women: Those who are pregnant or nursing should avoid using Sugar Defender without prior consultation with a healthcare provider.

Customer Reviews for Sugar Defender

Emily Johnson, New York, NY☆☆☆☆☆ "I've struggled with high blood sugar levels for years, and Sugar Defender has been a game-changer for me. My glucose levels are finally under control, and I feel more energetic throughout the day. Highly recommend it to anyone looking for natural support!"

Michael Brown, Los Angeles, CA☆☆☆☆☆ "After just a month of using Sugar Defender, I've noticed significant changes. My cravings have diminished, and I've lost weight without feeling deprived. This supplement is now a staple in my daily routine!"

Sarah Davis, Chicago, IL☆☆☆☆☆ "I was skeptical at first, but Sugar Defender truly delivers. I've experienced stable energy levels and reduced sugar cravings. The only downside is the taste; I wish it was a bit sweeter. Overall, a great product!"

David Smith, Houston, TX☆☆☆☆☆ "Sugar Defender is fantastic! I've tried multiple supplements, but none have worked as effectively as this one. My

blood sugar readings have improved, and I feel more focused and active. A must-try for those struggling with blood sugar issues!"

Pros of Sugar Defender

Natural Ingredients: Sugar Defender is formulated with 100% natural components, including plant-based extracts and minerals, which appeal to health-conscious consumers seeking safer alternatives to synthetic supplements.

Supports Blood Sugar Regulation: Many users report significant improvements in their blood sugar levels, thanks to the supplement's ability to enhance insulin sensitivity and stabilize glucose levels.

Weight Management Assistance: Sugar Defender not only helps regulate blood sugar but also aids in weight loss by curbing sugar cravings and improving metabolic function, making it beneficial for those managing their weight.

Boosts Energy Levels: Users often experience increased energy and reduced fatigue, attributed to stable blood sugar levels and effective glucose metabolism.

Positive Customer Feedback: With a high rating and numerous positive testimonials, many customers have found Sugar Defender effective in managing their blood sugar and enhancing their overall well-being.

Manufactured in FDA-Approved Facilities: The supplement is produced in FDA-registered and GMP-certified facilities, ensuring high manufacturing standards and quality control.

Easy to Use: The liquid formulation allows for straightforward dosing, making it easy to incorporate into daily routines.

Money-Back Guarantee: The 60-day money-back guarantee reflects the manufacturer's confidence in the product, providing consumers with assurance when trying the supplement.

Cons of Sugar Defender

Availability: Sugar Defender is only available through its official website, which may limit access for some users compared to other widely available supplements in stores.

Taste Considerations: Some users have mentioned that the taste of the liquid formulation may not be to everyone's liking, potentially making it less appealing for some consumers.







Individual Variability: As with any supplement, results can vary widely between individuals. While many experience positive effects, others may not see the same level of benefit.

Price Point: While many find it affordable, the cost might be considered high by some users, especially when compared to standard vitamins or supplements.

Potential Digestive Discomfort: Although generally well-tolerated, a few users have reported mild digestive issues, particularly when starting the supplement.

Not a Substitute for Medical Advice: While it can support blood sugar management, Sugar Defender should not be viewed as a replacement for medical treatment or professional health advice, especially for individuals with pre-existing conditions.

Pricing and Discount Options for Sugar Defender

Monthly Refills 30 Day Supply	Best Value 180 Days, 6 Bottles	Most Popular 90 Days, 3 Bottles
		
\$69 Per Bottle	\$49 Per Bottle	\$59 Per Bottle
YOU SAVE \$110	YOU SAVE \$780	YOU SAVE \$360
DELIVERED MONTHLY	+ 2 FREE E-BOOKS	+ 2 FREE E-BOOKS
BUY NOW	BUY NOW	BUY NOW
60 Day Money-Back Guarantee	60 Day Money-Back Guarantee	60 Day Money-Back Guarantee
		
TOTAL: \$179 \$69 + SHIPPING	TOTAL: \$1074 \$294 + FREE US SHIPPING	TOTAL: \$537 \$177 + FREE US SHIPPING
BUY ONE SAMPLE →		

Pricing

Sugar Defender is available in several purchasing options, which include:

Single Bottle Purchase:

Price: \$69.00 + Delivery Charges

This option is ideal for new users who want to try the product before committing to larger quantities.

Three Bottles Package:

Price: \$177.00 (Approximately \$59.00 per bottle) + Free Delivery

This package provides a more extended supply and is a cost-effective choice for users looking for a consistent regimen.

Six Bottles Package:

Price: \$294.00 (Approximately \$49.00 per bottle) + Free Delivery

This is the best value option, suitable for those committed to long-term health benefits, and it includes additional bonuses like eBooks.

Discounts

Bulk Purchase Discounts: Purchasing multiple bottles at once not only reduces the price per bottle but also includes **free shipping**, enhancing the overall value.

Exclusive Offers: Occasionally, there may be limited-time promotional offers or discounts available on the official website, so it's beneficial to check regularly for any current deals.

Additional Information

Money-Back Guarantee: All purchases come with a **60-day money-back guarantee**, allowing customers to try Sugar Defender risk-free. If they are not satisfied with the results, they can request a full refund within the specified period.

Payment Options: The official website typically accepts various payment methods, ensuring a secure transaction for users.

Sugar Defender Bonuses

Here are the **bonuses** that come with the purchase of **Sugar Defender**, especially when opting for the larger packages:

Bonus eBooks

The Ultimate Tea Remedies

This eBook provides insights into various types of teas and their health benefits. It includes recipes and guidance on how to use different teas to support overall health, with a particular focus on enhancing blood sugar control.

Learn How to Manage Type II Diabetes

This resource offers practical strategies for managing Type II diabetes. It emphasizes dietary choices, lifestyle modifications, and tips for maintaining balanced blood sugar levels effectively, helping users make informed decisions regarding their health.

Additional Benefits

Discounts on Bulk Purchases: Customers who purchase three or six bottles of Sugar Defender not only receive the bonus eBooks but also enjoy free shipping, enhancing the overall value of their investment in their health.

Where to Buy Sugar Defender

Sugar Defender is available exclusively through its [official website](#), ensuring authenticity and quality. This direct purchasing option protects customers from counterfeit products often found on other online platforms. To secure your supply and take advantage of special offers, including discounts on bulk purchases and bonus eBooks, visit the official Sugar Defender website today and make your purchase with confidence!

Does Sugar Defender Work?

Sugar Defender has garnered positive attention for its potential effectiveness in managing blood sugar levels and supporting weight loss. Many users report noticeable improvements in their blood glucose control, increased energy levels, and a reduction in cravings after incorporating the supplement into their daily routine.

The formulation, which includes natural ingredients like chromium, African mango extract, and gymnema, is designed to enhance insulin sensitivity and regulate glucose metabolism. While individual results may vary, numerous customer testimonials suggest that Sugar Defender can be a beneficial addition to a comprehensive health and wellness plan.

Is Sugar Defender Safe?

Sugar Defender is generally considered safe for most users due to its formulation with natural ingredients and the absence of synthetic additives, preservatives, or harmful stimulants. The supplement is produced in FDA-approved and GMP-certified facilities, which adhere to strict manufacturing standards to ensure quality and safety.

Many users report minimal side effects, with some experiencing only mild digestive discomfort. However, as with any dietary supplement, it is essential to consult with a healthcare professional before starting Sugar Defender, particularly for individuals with pre-existing health conditions, those on medication, or pregnant or nursing women. By doing so, users can ensure that the supplement is compatible with their health needs and overall wellness plan.

Frequently Asked Questions (FAQs)

How long does it take to see results from Sugar Defender?
Most users report noticeable improvements in their blood sugar levels within 3 to 4 weeks of consistent use. However, optimal results are typically achieved after 3 to 5 months of regular use.

Who should not take Sugar Defender?
Individuals with pre-existing health conditions or those on medication should consult a healthcare professional before starting Sugar Defender to ensure it is safe and suitable for their specific health circumstances.

Is Sugar Defender safe?

Yes, Sugar Defender is formulated with 100% natural ingredients and is produced in FDA-approved and GMP-certified facilities, making it a safe option for most users.

Do I need to follow a specific diet while using Sugar Defender?

While Sugar Defender can support blood sugar regulation, following a healthy diet rich in whole foods, including fruits, vegetables, and lean proteins, is recommended for the best results.

How do I take Sugar Defender?

For optimal results, take one full dropper of Sugar Defender daily, either directly under the tongue or mixed in a glass of water, preferably before breakfast.

Are there any side effects associated with Sugar Defender?

Sugar Defender is generally well-tolerated, but some users may experience mild digestive discomfort. If any adverse reactions occur, it's advisable to discontinue use and consult a healthcare professional.

Where can I buy Sugar Defender?

Sugar Defender is exclusively available for purchase through its **official website** to ensure authenticity and protect against counterfeit products.

What is the refund policy for Sugar Defender?

Sugar Defender comes with a 60-day money-back guarantee, allowing customers to request a full refund if they are not satisfied with the product.

Are there any bonuses with Sugar Defender purchases?

Yes, customers who purchase larger packages of Sugar Defender can receive free eBooks that offer additional health insights and tips.

How can I contact customer support for Sugar Defender?

For inquiries or support, customers can reach Sugar Defender's customer service via email at support@sugardefender.com

Final Thoughts on Sugar Defender

In a world where managing blood sugar levels is increasingly critical for overall health, Sugar Defender emerges as a promising ally. With its scientifically backed formulation, this supplement aims to not only regulate blood sugar but also support weight management and enhance energy levels. The inclusion of natural ingredients like

Chromium, African Mango Extract, and Gymnema underscores its commitment to safe and effective health support.

The overwhelmingly positive customer reviews reflect the potential of Sugar Defender to make a real difference in users' lives, providing a holistic approach to blood sugar management. Its ease of use, combined with a 60-day money-back guarantee, makes it an attractive option for those seeking to improve their metabolic health without the risks often associated with synthetic alternatives.

Ultimately, for individuals looking to take proactive steps toward managing their blood sugar levels and enhancing their overall well-being, Sugar Defender appears to be a worthwhile addition to a healthy lifestyle. However, as with any supplement, it's essential to consult with a healthcare provider, especially for those with existing health conditions or those taking medications. Investing in Sugar Defender could very well be a significant step toward achieving better health outcomes.